

ASPIRATIONS

ALWAYS ASPIRE TOWARD SOMETHING BETTER



2015 Fellowship Winners

Congratulations to the Sigma Beta Delta Fellowship winners Class of 2015. Over the last 22 years of service, Sigma Beta Delta has awarded more than \$150,000 to students who have attained superior academic records in the study of business, management and administration.



Makenzie Leigh Frank
Driemeier Fellowship
McPherson College



Kimberly Fown
Hammerly Fellowship
Urbana University



Miguel Puertas
William Carey University



Joseph Amato
Caposella
Springfield College



Christina Thomas
Craig Fellowship
Chowan University



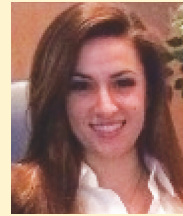
Andrew Chwalik
ACBSP
Region 4 Fellowship
Walsh University



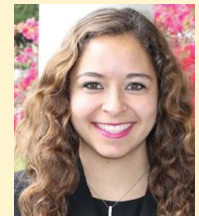
Elisha M. Goodman
ACBSP
Region 2 Fellowship
Chestnut Hill College



Kandee Kirkman
Scott Fellowship
Argosy University
Phoenix



Paige Lilly
Penn State -
Lehigh Valley



Megan Gomez
Bearden Fellowship
Mt. Saint Mary's
University



Ronna Hatley
ACBSP
Region 6 Fellowship
Rogers State University



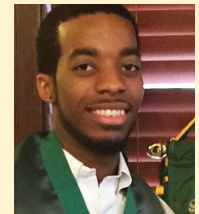
Rachel Rowswell
Vieland Fellowship
Lake Superior
State University



Robert Scott
DiMieri
Kehoe Fellowship
Wilmington University



Hollie Nop
Eubanks Fellowship
Castleton State College



Darius Cosse
Touhill Fellowship
Our Lady of Holy
Cross College



Kassia Khuu
Nyack College



George Ponzoni
Hartwick College



Adam Lingle
Keiser University-
Tallahassee



Eric Visser
Cornerstone
University



Carol Wilson
Thomas Edison
State College

Sandra's Salutations



It has been an honor to serve you

As I reflect on the past four years serving as President of Sigma Beta Delta, I am reminded of the principles of Wisdom, Honor and Aspiration embodied in our insignia and uniting our members.

We honor your academic achievement and challenge you to continue applying knowledge in your life, to make a difference with the wisdom you have gained. I had taught at larger universities before going to a university eligible for Sigma Beta Delta membership. I knew our best students could compete and challenge the top students at those other universities. Today, you continue to affirm my earlier belief in you with your efforts on campus and in your careers.

We also honor our supporting staff at more than 440 colleges and universities we have chartered. Your faculty advisers, officers and staff believe in you. Most are not paid extra to organize the selection and induction ceremonies or meetings for Sigma Beta Delta members. The honor you earned from Sigma Beta Delta for your academic achievements is the beginning of many more honors you will receive.

In this edition of *Aspirations*, we honor our Founding President Dr. James Bearden as our Ambassador of Excellence. His love of history and editing of *Aspirations* for the last 20 years documented our stories.

We honor the 2015 Fellowship winners and then feature five of our earlier Fellowship recipients. We are proud of their success at other academic institutions and in careers that make a difference in the lives of people in their local community, our nation and the world.

Over the last four years we have seen Sigma Beta Delta grow and flourish. This spring, we increased the number of fellowships to 31 to help offset the rising cost of education for more of you. We also installed new chapters to expand our reach to students at more colleges without a business honor society, worked with faculty advisers to improve the induction process on your campus, and reorganized procedures at our central office to better serve students and advisors. This work will continue.

As we all accept new challenges, our aspirations change. Sigma Beta Delta has more than 85,000 members who aspire to achieve their individual goals. Just think of the difference these committed individuals can make in the world!

As I complete my final year as President, I want to join you in setting new goals and living by Mahatma Gandhi's words: "Be the change you wish to see in the world."

Sincerely,

Sandra H. Hart
President, Sigma Beta Delta

OFFICERS

President
SANDRA HILE HART
Texas Wesleyan University
817-473-2220
hart.bs@gmail.com

Vice President
RANDALL M. McLEOD
Harding University
501-279-4201
rmmcleod@harding.edu

Secretary/Treasurer
CLIFFORD L. EUBANKS
Eubanks Enterprises
334-243-5887
etwinoaks@aol.com

Immediate Past President
DONALD H. DRIEMEIER
University of Missouri–St. Louis
314-741-5069
driemeierj@gmail.com

Founding President
James H. Bearden
East Carolina University
252-328-6190
beardenj@ecu.edu



BOARD OF DIRECTORS

Gloria Clark
Winston-Salem State University
336-750-2347
clark@wssu.edu

Janet Ewing
Mary Baldwin College
540-887-7055
jewing@mbc.edu

Dell Ann Janney
Culver-Stockton College
573-288-3623
djanney@culver.edu

J. Preston Jones
Nova Southeastern University
954-262-5127
prestonj@huzenga.nova.edu

William Kehoe
University of Virginia
434-924-7045
wjk@comm.virginia.edu

Barbara H. Nemecek
612-812-6182
bnemecek@outlook.com

TO CONTACT SIGMA BETA DELTA

Executive Director
PETER BANHOLZER
1 University Blvd.
Provincial House P11
St. Louis, MO 63121-4400
1-888-723-7181
FAX 314-516-4455
sigmabetadelta@umsl.edu

Jim Bearden – Ambassador of Excellence



Jim Bearden, founding president Sigma Beta Delta, was named Ambassador of Excellence at the society's Quadrennial Meeting in July. Pictured left to right are: Gloria Clark, Peter Banholzer, Sandra Hile Hart, Don Driemeier, Randall McLeod, James Bearden, J. Preston Jones, Janet Ewing, and Dell Ann Janney.

James Bearden recalls a meeting in 1987 where the discussion led to the need for a national honor society for a growing number of students in business, management and administration whose schools did not have specialized accreditation. That meeting led to the creation of Sigma Beta Delta, an international honor society. Bearden was named its first president.

For his role in its founding, his leadership, and lifelong dedication to honoring academic excellence, Bearden was named Ambassador of Excellence at Sigma Beta Delta's quadrennial meeting in July 2015.

"One of my proudest moments was installing that first chapter at Belmont University in Nashville, Tenn.," Bearden recalled. "In 1994 we visited all seven schools, our charter chapters. To see the creation of an honor society first hand is a thrill. And when I see what has been accomplished, I realize how important those first charter chapters were."

Today, Bearden's legacy includes 440 active chapters in 47 states and internationally. In 2015 alone, 18 new chapters were added including the International College of the Cayman Islands and Newbold College in Bracknell, England. More than 85,000 outstanding students in the fields of business, management and administration have been honored and in turn uphold the principles of their honor society. And the society has awarded more than \$150,000 in fellowships.

Bearden has spent the last 56 years at East Carolina University in Greenville in numerous positions including professor, dean, and now director of the

university's Center for Leadership Development. At 82 years old, he remains as busy as ever and insists on sharing accolades.

"Sigma Beta Delta has been quite a journey and we've done fairly well," he said with customary understatement. "All the people who were on the ground floor of this creation were talented people, experienced in business and academia."

Many of those accolades go to the students chosen for induction into the honor society. They excel in their academic programs and are leaders. Bearden emphasizes that the word "honor" plays a significant role in what those students are asked to do once they leave college.

"Clearly these students go on to accomplish great things in their fields," he said. "But there are other ways they can succeed. We ask them to think about the advantages they have had and how they in turn can make a difference in other people's lives." Part of the society's formal ritual during induction encourages, "a life distinguished by honorable service to humankind." In 2010 student leaders were asked to create a way Sigma Beta Delta could challenge its members and society to aspire to live a meaningful life beyond academics and business.



James Bearden

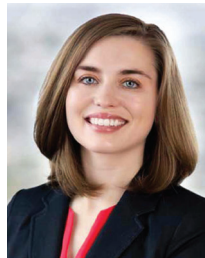
Continued on page 6

ASPIRATIONS REALIZED

Each year Sigma Beta Delta awards fellowships to outstanding students to use in their academic studies. We caught up with five former award recipients from years stretching back to 2002. Their stories reflect Sigma Beta Delta's recognition of their high scholastic achievements, what their fellowships meant to them, and the careers they have been able to build.

Kerra J. Melvin

Kerra J. Melvin was awarded a Sigma Beta Delta Fellowship in 2008 and it helped pay for her senior year as a student at Montana Tech of The University of Montana. The summer after graduation she landed an internship in Washington D.C. with the Senate Finance Committee, chaired by Sen. Max Baucus of Montana. She had planned to begin accounting graduate school that fall, but decided to stay in D.C. after being offered a full-time position with the Committee.



"I had never been east of Montana and there I was part of a tax team on the Senate Finance Committee. It was awesome," she says. She spent 16 months as a research assistant dealing with tax aspects of the Affordable Care Act, a signature piece of legislation for President Obama.

"The Sigma Beta Delta Fellowship helped pay for my senior year and it certainly helped open the door for graduate school," says Melvin. "Many of the people I worked with in Washington, D.C. were lawyers and I realized that I was going to change my focus and pursue tax law. I still include the Sigma Beta Delta award on my resume. And it's still an honor to be recognized by such a prestigious organization."

Melvin earned her law degree from the University of Washington School of Law in 2013 and today is a Corporate Associate with DLA Piper in Seattle, a global law firm located in 30 countries around the world. Her practice focuses on securities and corporate finance, mergers and acquisitions and general corporate counseling with an emphasis on representation of emerging growth companies and venture capital firms.

Lawrence Tan

Lawrence Tan's passion for helping others began as a volunteer firefighter/EMT when he was in high school. He was later hired by the New Castle County, Delaware Public Safety Department as a cardiac ambulance technician. Today, with decades of service behind him, he is the commanding officer of Emergency Medical Services for that same county overseeing a staff of 124, and handling 30,000 calls a year in a county with more than 550,000 residents.



Over more than three decades of service, Tan has paralleled his career and education working full time while attending college. He graduated in 2002 with honors and a BS degree in Human Resources Management from Wilmington University. He received a fellowship from Sigma Beta Delta that same year. In 2006, he earned a law degree from Widener University School of Law.

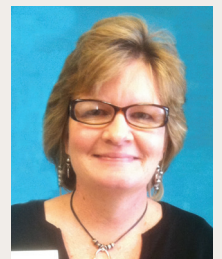
"That fellowship opened doors to meet my peers and previous Sigma Beta Delta members," says Tan. "I was able to build relationships that have been very important to me."

His expertise in emergency management, public safety, and disaster response has led to his appointment to multiple commissions on the local, state, and national levels. In 2008 he received a congressional appointment to the National Commission on Children and Disasters. He was one of 10 nationally prominent individuals from the health care, emergency management, and legal fields to serve on the commission chaired by Mark Shriver of Save the Children organization.

"About 25 percent of the population affected by any disaster are children, but most disaster preparations are for adults," says Tan. "Our charge was to examine and assess the needs of children in preparing for, responding to, and recovering from major disasters such as Hurricane Katrina. It helped shape federal policy and promoted the integration of the unique needs of children into disaster plans."

Kim Kidd

With a full-time job, a husband and three children, Kim Kidd had already perfected her skills in teamwork, organizing and delegating when she decided to go to college.



"I've always been a lifelong learner and thought it was time," says Kidd. Last year she was one of 14 graduates of Lake-Sumter State College's (LSSC) first bachelor's degree program. LSSC is located in Central Florida. Kidd had been working at the college in various administrative positions while attending classes in the evening and online.

Once she earned her degree in Organizational Management, she was immediately hired as a Title III grant manager. Thanks to a five-year, \$2.9 million grant program, Kidd now manages and monitors the day-to-day activities of the grant which is to redesign and strengthen mathematics programming at LSSC.

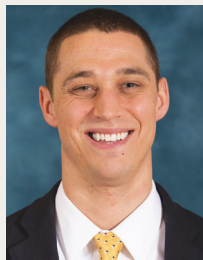
She credits Sigma Beta Delta for helping her land the position. "College administrators introduced me to the mission of Sigma Beta Delta and how serving the community can promote success," says Kidd. "I was asked to be president of the chapter. Having the Sigma Beta Delta chapter supporting, counseling and believing in me helped me realize I could achieve my goals. I was able to network my way into the position."

When she moved from student to employee, Kidd became co-advisor to the Sigma Beta Delta chapter at LSSC and is giving back to people who follow in her footsteps.

"I want to continue my role as a trailblazer and focus on higher education for older women," she says. "I want to continue increasing educational opportunities in my community."

Matt Kirinovic

Matt Kirinovic's goal is to become a collegiate athletic director. As a director of major gifts in the Midwest region for the University of Michigan, his trajectory seems to be headed in the right direction.



Kirinovic is part of the school's \$4 billion fundraising campaign, one of the largest public university campaigns in the country. Launched in 2013, the campaign ends in 2018 and has raised more than 75 percent of its goal. It's the kind of work that inspires him.

"It's critical to invest in and take care of your community in hopes that others do the same," says Kirinovic. "My parents taught me that and it continued through membership in Sigma Beta Delta and now in my current position. I want to be able to give student athletes the same kinds of opportunities I had while I was a student."

Kirinovic received a Sigma Beta Delta fellowship in May of 2007 when he graduated from Hope College. The fellowship helped him earn both an MBA and a Master's in Sports Administration from Ohio University. He interned in the athletic department at Indiana University and worked for two years in the athletic department at the University of Memphis. In 2012 he was hired by

the University of Michigan athletic department as an associate director of development.

"The Sigma Beta Delta award remains on my resume because it shows a level of achievement," he says. "It sets me apart and boosts my confidence."

Kirinovic is currently located in the greater Memphis area where he lives with his wife and 11-month-old son. He sees himself as a small part of a big engine. He understands how the investment made by others in him has helped him achieve his goals and he tries to do the same for the next generation of leaders.

Alex Wolf

When Alex Wolf was an undergraduate at Ohio Wesleyan University near Columbus in the late 1990s, he became a member of Sigma Beta Delta.



"It was quite an honor to become a member as a reward for reaching a certain level of achievement," says Wolf. "And when I was awarded a Sigma Beta Delta Fellowship I felt it was a huge validation for all the hard academic work that goes into getting a degree."

He earned a bachelor's degree in accounting in 1999 and worked four years for Ernst and Young. He returned to school and earned an MBA in analytical finance from the Kellogg School of Management at Northwestern University. He was hired by Citigroup as an associate in 2005, an exciting time for his budding career.

"I rotated through three six-month stints in various areas of finance including working at Citi's Shanghai office," Wolf says. "To have an opportunity to live and work overseas is eye opening. It's very different than merely traveling to another country."

Wolf moved in 2007 to Goldman Sachs, a leading global investment banking, securities, and investment management firm. Today he is a vice president in corporate treasury focusing on balance sheet forecasting and liquidity risk management. In 2012 he was given a second opportunity to live and work overseas when he helped launch a treasury team from the ground up in Bengaluru, India.

"The two experiences abroad allowed me to compare and contrast two of the world's fastest growing economies at the time," he says. "And it was a unique experience to do something entrepreneurial for a big company like Goldman Sachs."

Wolf says he enjoys his current position and Sigma Beta Delta has provided him with a link to his past. He still stays in touch with his old accounting friends, Sigma Beta Delta alumni from Ohio Wesleyan.

"I even met up with one of them in Kolkata," he added.

Sigma Beta Delta NEWS

Welcome

Wilberforce among newest 18 chapters



It's been a busy year at Sigma Beta Delta. Eighteen schools received chapter charters including Wilberforce University, the oldest of the Historically Black Colleges and Universities, and two international schools.

Founded in 1856 by the African Methodist Episcopal Church, Wilberforce became a center of black cultural and intellectual life in southwestern Ohio. The school's name honors William Wilberforce, an 18th century British abolitionist.

Generations of leaders – teachers, ministers, doctors, and politicians – have been educated at the university. Among the school's many distinguished faculty members were W.E.B. DuBois, scholar and co-founder of the NAACP; and William S. Scarborough, classical language scholar.

The university celebrates its 160th anniversary this year led by President Algenia W. Freeman.

Our New Look



Aspirations has taken on a dynamic, new look and we're inviting you to be a part of it! Do you have news you want to share? Earned a new degree, new job, or a promotion? Received any honors this year? We would love to hear from you. Chapter advisors, faculty and administrators let us know what your chapter has been doing this year.

Have you been inspired by some of the stories you've read in this issue? Contribute to a Sigma Beta Delta Fellowship and help make it possible for a student to finish college or go on to graduate school. Want to know more about the society's "Power of One" organ donation challenge?

Visit: sigmabetadelta.org for more information on membership, merchandise, how to contribute, and much more.



Joel Bomgar

Elected Mississippi State Rep.

Joel Bomgar an honorary member of Sigma Beta Delta and graduate of Belhaven

University in Jackson, Miss., was elected to the Mississippi House of Representatives in November.

Joel Bomgar founded the Bomgar Corporation in 2003 while he was still a Belhaven student and working as a systems engineer. He developed a remote technical support system that enjoyed almost instant success. Over the next 12 years he built a business with earnings of more than \$65 million serving more than 9,500 companies around the world. The Bomgar Co. has been recognized as one of the fastest-growing private businesses in North America.

In 2014, Bomgar sold the company to TA Associates, a leading global growth private equity firm. He remains chairman of the company, but is now free to work in the public sector, an opportunity that he says he has always been drawn to. He won the House seat by 68 percent of the vote.



Jim Bearden continued from page 3

"As you can imagine, the students analyzed, studied and discussed the problem and recommended promoting organ and tissue donation," recalled Bearden. "They felt it was the biggest issue all members of the society could carry out that would benefit humankind regardless of their race, color, religion, economic or social standing."

The society agreed with the student leaders and adopted it as their national initiative. "The Power of One" was deemed the initiative's slogan. Like its founding president, the slogan reminds all that one individual can make a positive and powerful difference, not just in their own life but in the lives of countless others.

Sigma Beta Delta Contributors

July 1, 2014 through March 31, 2016

MEMBER CONTRIBUTIONS Contributors are members of Sigma Beta Delta chapters at each school.

\$5,000+

East Carolina University
James H. Bearden

\$1,000-5,000

Texas Wesleyan University
Sandra Hile Hart

University of Missouri St. Louis
Donald H. Driemeier

University of Virginia
William J. Kehoe

\$100-500

American Public University
Alan Meitzler

Argosy University – Orange County
Wayne Foss
Charles F. Reinhardt, Jr.

Belmont University
Clifford L. Eubanks

Benedictine University
Edward J. Moran

California Lutheran University
Yong D. Lim
Steven Lew Mason

Cedarville University
Chris Rudolph

College of Saint Elizabeth
Suzanne T. Trowbridge

Culver-Stockton College
Ronald W. Leftwich

DeVry Online/Keller Graduate School of Management
Steven K. Wollenburg

DeVry University – Irving
Delonda Nelson Cooper

Franklin University
Jonathan Scales

Harding University
Randall McLeod

Holy Names University
Meredith Orthwein

Kean University
Phyllis H. Warden

Long Island University
Clothilda Higgs

Lynn University
Katherine M. Steenberg

Mary Baldwin College
Janet S. Ewing

McKendree University
Michael O. Moorman

National University
David R. Costantino

Nova Southeastern University
Dr. Kathleen Guy
J. Preston Jones
Rex C. Patton
Michael L. Wolfe

Robert Morris University
Robert G. Ontolchik

Texas Wesleyan University
Linda Arredondo

University of Nebraska at Kearney
Barbara H. Nemecek

University of Pikeville
Harold H. Smith

University of Texas of the Permian Basin
Tammie Thomson

William Paterson University
Frank DeFrancesco

Wilmington University
Wilma Yu

Winston Salem University
Dr. Gloria Clark

\$50-99

Arcadia University
Terrie Crowe

Argosy University – Chicago
Ruby Davis

Argosy University – Colorado
Dr. Robert L. Finkelmeier

Argosy University – Online
Jacqueline Cheng
Pamela Shackelford

Argosy University – Orange County
Lindsey Marie A. Baker
Ondre Harris

Argosy University – Sarasota
Elgin Foreman, Jr.
Jonathan T. Small, II

Argosy University – Washington, D.C.
Kristen C. Harding

Barton College
James S. Pridgen

Bellevue University
Lizette Snyder

Belmont University
Charles Justin Lawson
Gilmore M. Sanes, Jr.

Bemidji State University
Andrew Walsh

Benedictine University
Laura J. Bennell
Olivia Baby Ekeh
Varaporn Gorr
Shefali Mookencherry

Cabrini College
Emily White

California Lutheran University
Elizabeth Foushee
Evy Schulz

Capella University
Augustine T. Ekwere

Carroll College
Charles E. Rolling

Clayton State University
Charles S. Conklin, II
Ernest Coward

College of Mount St. Joseph
Noreen M. Gorman

College of Saint Elizabeth
Cecilia Horne
Janine Yancho Swenson

College of Staten Island – CUNY
Michael Cianciaruso
Joseph Petrucelli

Colorado Technical University
Rita Giovinazzo

Columbia College
Stephania Y. Drane
Robert L. Schwantes
Leslie Ann Vandegrift

Concordia University – Irvine
Christine Barnes

Concordia University – Portland
Matthew Rian Marquette

Concordia University – Texas
Penny L. Cedel

Culver-Stockton College
Dell Ann Janney

Curry College
Charles F. Murphy

Davenport University
Bedelia Brown

Davis & Elkins College
Carolyn N. Bussey
Phillip Bussey, Ph. D.
Gloria M. Payne

Defiance College
Janice Arvay

DeVry University – Colorado
Louis Brugger, Jr.

DeVry University – Irving
Analisa de la Espriella

DeVry Online/Keller Graduate School of Management
Peter Amo Grewe
Margrit Sigrist

DeVry University – Nashville
Lisa G. Southall

DeVry University – Philadelphia
Thomas A. Brauer
Megan N. Wentzel

DeVry University – Phoenix
WD Moore

DeVry University - South Florida
Yarmeli J. Lares Rincon
Melissa Soto

Dominican College of Blauvelt
Peter Chavez

East Stroudsburg University
Brandt Maloney

Elizabeth City State University
Othello M. Fitzgerald

Felician College
Rosarito P. Jahn

Franklin Pierce University
Charles T. Saunders, Ph. D.

Holy Family University
Lisa-Marie Foley

Holy Names College
Stacy Leier-Valentine

Hood College
Douglas Ehrhardt
Tamara Marie Francik
Peggy Ann Lansbach O'More
Tracy V. Pauter

Husson University
Ned Calvert

Indiana University of Pennsylvania
Michael J. Pierick

Keiser University-Fort Lauderdale
Allison Ford

Kendall College
Jennie Tiberio

Lake Superior State University
Christine Flood

Liberty University
Kenneth O. Bonaparte
David Countryman
Celene Good
Jason Hudnall
Nathan Overbeek

Life University
Philip Jenkins

Limestone College
Michael Anthony Ponzio, Jr.

Long Island University
Warren Bergstein
Renee M. Smith
Joseph N. Vega

Lourdes University
Yetsabeth Gonzalez

Lycoming College
Jude Robert Bubeck

Lynn University
Marvin E. Miller

Marian University
Benjamin Peter Morgan
Christine M. Vos

Maryville University
Alan Loudon Williams

Martin Methodist College
Alice Burkins
Lynn S. Ives

Maryhurst University
Wendy Meigs

Marymount Manhattan College
Mary M. Wagner

McKendree University
Bobbie B. Schweiger
Frank Spreng
Nancy S. Starnes
Karol J. Tiemann

Medaille College
Kim M. Berghash
Karl Steiner

Metropolitan College of New York
Kenneth Rhodes, Jr.

Metropolitan State University of Denver
Linda Kay Dailey

Mid-America Christian University
Sharla D. Allen

Mid-Continent University
Richard W. McCall

Misericordia University
Eileen Cipriani
Paul C. Woelkers

Molloy College
Elizabeth Rose Boylan
Irene Haynor
Leonardo Hernandez, III
Patricia Pasqueralle
Claudia Popovits
Nicole Sacco

Monroe College
Veronique Green

Montana State University – Billings
Robert Thayer

Mount Ida College
Victoria M. Heydari

Mountain State University
Kathryn A. Thalman

National University
Ronald Kaplan

North Carolina State University
Stephen Marshall Antosek
Peaches Gunter Blank
Jennifer Holmes Presnell

Nova Southeastern University
Nicholas C. Alexander
Dr. Danny Athanasaw
Dr. Yvonne Athanasaw
Dale Allen Prondzinski
Lyle E. Cady, Jr.
Roshonda Calhoun
Dr. Jon A. Crispin
Mary Susan De La Vega
Wallace Marsh

Palm Beach Atlantic University
Sterling A. Grubbs

Pennsylvania State University – Erie
Patricia Stapley Patterson

Presbyterian College
Ryan Cameron Porter

Robert Morris University
Stephen Anthony Combi
Mary A. Meerhoff
Patricia A. Stocke

Robert Morris University – Chicago
Julia Foust
Jared A. Wasserman

Robert Morris University – Orland Park
Herbert Lockett, Jr.
Monica M. Turner

Rogers State University
Carlos Ochoa

Rowan University
Stephen J. Jamison

Saint Leo University
Nathan Edward Bruno
James Coquat
Alicia Gonzalez
Mayes David Mathews
Christina Thomas
Gerald Van Guilder

Saint Mary's College of California
William Bichsel
Erin Harnetiaux

Saint Michael's College
Jeffrey C. Lewia

Salve Regina University
Mark T. Hough

Sigma Beta Delta

1 University Blvd.
Provincial House P11
St. Louis, MO 63121



Contributors continued

Shorter University

Christopher Beno
Britney L. Smith

South University – Online

Tashia Bramhan
Carolyn M. Rushton
Christina Wood

Southeastern University

Edith L. Yates

Southern University at New Orleans

Alisha Y. Adaway
Linda M. Lewis

Texas Wesleyan University

Thomas F. Armstrong

Texas Woman's University

Bonnie F. Bratcher
Doris J. Ross

Thomas Edison State College

Barbara A. Drzymkowski

Troy University

Jason Alexander

United States Air Force Academy

Christopher William Rohe

University of Arkansas Fort Smith

Carmon Snider

University of Hartford

Jean D. Fletcher

University of Illinois – Springfield

Linda Tobias

University of Nebraska at Kearney

Dennis Heffernan
Thomas J. Henning

University of New Haven

Thomas E. Brown
Christina Eggert
Kenneth J. Kelly
George S. Krzak
Sarah Monck
Michael D. Quinn

University of North Carolina

at Asheville
Theresa Rene Moore

University of Tampa
Steven Shaw
Kathleen Witcher

University of Texas of the Permian Basin

Judith H. Devenport

University of Saint Joseph

Victoria Johnson

University of Wisconsin - Green Bay

Marilou Melcher

University of Wisconsin – Stout

Timothy L. Stevens

Virginia State University

Cheryl E. Mitchem
Dr. Mary Newkirk

Walsh University

Anna M. Carey

Washington College

Rebecca Loree

Wayne State College

Timothy Benes
Carter (Cap) Peterson
June M. Wagner

Wilmington University

Colleen R. Allen
Lynn Amey
Harold Lowe
Cheryl Nolting
Elizabeth A. Stone

Worcester Polytechnic Institute

Christian Rossetti

\$5-49

Alaska Pacific University

Lisa Tibbo

Argosy University – Chicago

Dr.Carolynn Crump

Beaver College

Patrick McTeigue, Jr

Benedictine University

Roberto Alas
Victoria L. Geis
Stephen Pikul

Berea College

Paul G. Richard

California Lutheran University

Kevin A. Cox

Cabrini College

Victoria L. Nastala

Christopher Newport University

Marshall Booker

College of Mount St. Joseph

Noreen M. Gorman

College of Saint Elizabeth

Carole A. Soricelli

Colorado Technical University

Jason D. Finagan

Columbia College

May Arvin
David M. Nunley

Concordia University – Texas

Howard Lacey

Culver-Stockton College

Donald K. Gnuse

Defiance College

Rick A. Smith

Delaware Valley College

Tram Thach McNamara

DeVry University/Keller Graduate School

Samuel C. Domenico

DeVry University – Phoenix

Joscelyn C. Hadson-Taylor

Dickinson State University

Judith G. Monasky

Felician College

Christine A. Laino

Franklin Pierce University

Kathleen Kotakis

Greensboro College

Deborah E. LaRue

Hodges University

Ann M. Kirby

Hood College

Vivian Chao
Janet P. Kuhns

Husson University

Kevin Glynn
Karen M. Kydd

Indiana University of Pennsylvania

Evelyn J. DeMarines

Iowa Wesleyan College

Kay L. Siebenaler

Lees-McRae College

Dr. Harvey L. Bauman

Long Island University

Chris L. Anderson

Lynchburg College

Richard T. Pugh

Marian University

Karen Vander Galien

McKendree University

Janet M. Isom

McKendree University – Kentucky

Mitchell McLaurin
Ophelia McLaurin

Metropolitan State University of Denver

Tracy J. Merges

Misericordia University

Karen Smith

Mountain State University

Gregory L. Atkinson

Nova Southeastern University

Wil Trower

North Carolina State University

Brenda S. Birkett

Palm Beach Atlantic University

Robin J. Buck
David Alden Luhrsen

Robert Morris University

Christopher J. Warnick

Salve Regina University

Dr. Arlene Nicholas

Shorter University

Arlean Parsons

South University Online

Kristin Johansson

Texas Wesleyan University

Ellen Zumar

Texas Woman's University

Elsa Marie Pasanen

Thomas College

Marc Allen Robert Cone

Thomas Edison State College

Mary M. Garcia

University of New Haven

Terence Henn
Randolph Thomas

Urbana University

John Garon

Virginia State University

Jeremy Scott

Walsh University

David M. Johnson
John D. Morvay

Wilmington University

Talia Hickman
Joseph C. Holler
R. Alan Moore
Dr. Michael L. Schirmer