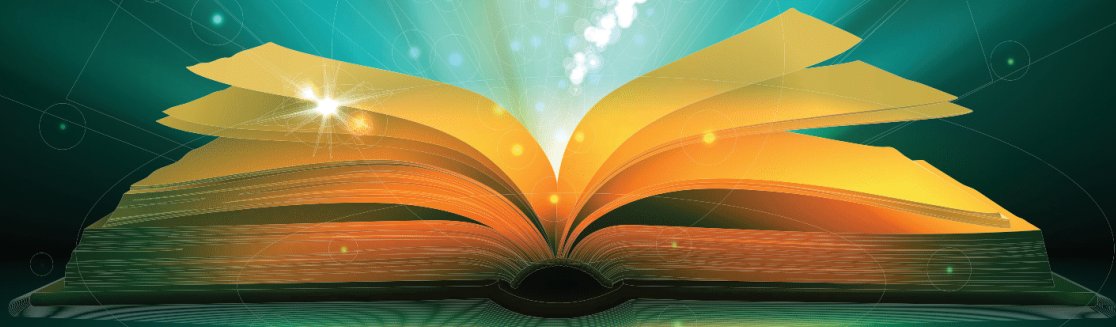


ASPIRATIONS

Always Aspire Toward Something Better

**TRUST THE
MAGIC OF NEW
BEGINNINGS.**



FROM THE
President's Desk

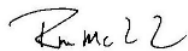
“Transitions”

What a year. The word pandemic used too often in conversation, Zoom fatigue, plastic partitions, and masks. As soon as we thought it was over, new waves came. Now, we have a brighter outlook. A new beginning with so many schools resuming in-person education, and it seems we have all mastered the Zoom experience.

Sigma Beta Delta has also been a part of the transition participating in Zoom chapter installations, inductions, graduations, committee, and board meetings and mailing induction packets individually instead of to your schools for distribution. We have learned to be resilient and look forward to starting fresh in this new academic year. Our “Aspirations” focuses on this idea. Your board of directors looks forward to a new year.

It is no stretch to say that most schools, universities, and organizations did not accomplish all that they had planned in the pandemic year. SBD is excited for what is ahead: updating our web page by making it more user friendly, informative, creating a faculty advisor workshop, offering a new software package to streamline efficiency, adding new board members, and always increasing the services our central office provides to chapters.

We are proud to serve as your Honor Society. Our community wants you to soar in your pursuit of excellence. You are mentors, leaders, and the future of our society. Strive to make your school and your community a better place. Make this transition year the best yet.



Central Office
1330 Fifth Avenue Suite 260
Garner, NC 27529
Fax: 984-200-9947
admin@sigmabetadelta.org



Board Officers

Secretary
Dr. Gloria Clark
clarkg@wssu.edu

Founding President
Dr. James H. Bearden
beardenj@ecu.edu

Treasurer
Prof. Janet Ewing
jewing@marybaldwin.edu

Vice President
Dr. J. Preston Jones
prestonj@nova.edu

President
Prof. Randall M. McLeod
rmmcleod@harding.edu

Immediate Past President
Dr. Sanda Hile Hart
hart.bs@gmail.com

Board of Directors
Dr. James Maxwell
james.maxwell@Imunet.edu

Director Joel Maier
joel.maier@phoenix.edu

Prof. Lee Kenyon
lee.kenyon@daytonastate.edu

Dr. Melinda Piller
mpiller@thomasu.edu

Dr. William Kehoe
wjk@virginia.edu

Advisory Council
Executive Director
Brandi Clark
brandi.clark@sigmabetadelta.org

Dr. Clifford L. Eubanks
etwinoaks@aol.com

SIGMA BETA DELTA —
Creation

In 1979, Deans Dr. Don Driemeier, at the University of Missouri St. Louis, and Dr. James Bearden at, East Carolina University, and Clifford Eubanks at the University of Central Florida, worked together as an AACSB accreditation team for the University of Texas. During the early 1980's Driemeier and Eubanks served on the AACSB Accreditation Committee.

From 1986 to 1990 Bearden, Driemeier, and Eubanks, served on the Board of Governors of Beta Gamma Sigma, a Business Honor Society, created in 1913 at the Universities of Illinois, Wisconsin, and California Berkley. This honor society was only available to AACSB-accredited schools. Delta Mu Delta Honor Society, also created in 1913 at New York University, was similarly only available to schools accredited by ACBSP. During Beta Gamma Sigma Board meetings, schools, not accredited by AACSB or ACBSP, requested BGS chapter creations at their respective institutions.

During a board meeting in 1989, Dr. Clifford Eubanks made a motion that Beta Gamma Sigma should engage in a study to determine a means for providing honor society recognition for students at non-AACSB/ACBSP accredited institutions. In 1991, Beta Gamma Sigma President Dr. Bob Owens appointed a committee to study the proposal for an international honor society that would recognize students in business schools who were not eligible for Beta Gamma Sigma or Delta Mu Delta chapters. The committee included Dr. James Bearden, Director of the BB&T Leadership Center at East Carolina University, Chair; Dr. Clifford Eubanks, Dean of Belmont University; Dr. Quiester Craig, Dean of North Carolina A&T University; and Dr. Richard Lewis, Dean of North Carolina State University.

In 1994, this recommendation was approved by the Board of Governors, and a motion was made by Dr. William Kehoe, a current and longtime board member of Sigma Beta Delta. Dr. Bearden became the founding President, Dr. Clifford Eubanks was Vice-President, and Dr. Donald Driemeier was Secretary/Treasurer. Founding board members included Dr. Quiester Craig of North Carolina A&T University, Dr. Richard Lewis of North Carolina State University, Dr. Richard Scott of Baylor University, Dr. William Kehoe of the University of Virginia, and Dr. Bob Owens of Louisiana Tech University.

On March 24, 1994, Sigma Beta Delta's first chapters were instituted at Belmont University. Chapters were founded at Morehouse University, North Carolina State University, and Southern University a few days later. Since the society's founding in 1994, 478 chapters have been installed.

Note: Sincere appreciation to our school faculty advisors, who enabled the growth and development of Sigma Beta Delta and continue the work necessary to create and maintain local chapters.

SIGMA BETA DELTA —
Farewell

We send our best wishes to retiring Sigma Beta Delta International Honor Society Vice President Dr. J. Preston Jones. Dr. Jones has been a member of the Board since 2002 and was elected Vice President in 2015.



Dr. J. Preston Jones

The Bald Eagle is a symbol of freedom, spirit, and the pursuit of excellence. As a collector of eagle statues, Dr. Jones' leadership style brought to the SBD Board the ideals the eagle represents. His signature was "Achieving Excellence!" Thank you, Dr. Jones, for your untiring service and dedication to Sigma Beta Delta and its principles of wisdom, honor, and the pursuit of meaningful aspirations. You will be missed.

Advisor SPOTLIGHT

What do you do as a Sigma Beta Delta Advisor?

“Twice a year I run the induction report and calculate the top 20% of students who meet the criteria for eligibility to join Sigma Beta Delta, after which I contact them about joining the honor society. Once the deadline has passed I work with Brandi and the team at Sigma Beta Delta to order regalia and certificates for our ceremony. My favorite part of being an advisor is organizing the induction ceremony and putting together a packet of materials with a small gift for new inductees.”

What strategies did you use during the school year to attract new members?

“Since taking over I have doubled our new membership rate by sending reminders to join one month, two weeks, and three days before the induction deadline. Wilmington University has also created a webpage that highlights the honor societies students can be invited to, including Sigma Beta Delta. I am always happy to direct people to the website and answer questions from students and parents before they join.”

Have you done any activities that have been successful in recruiting new members?

“We currently have a letter campaign that we send via e-mail, but once we are back to in-person learning I plan to work with our Alumni Relations and Online Learning & Ed Tech departments to create a campus chapter for past and present inductees to hold gatherings and networking events.”

What kind of support services would help build your success as an advisor?

“With everything going online over the past year, more virtual resources and support would be helpful. We plan to continue utilizing the slideshow presentation I created for the virtual induction ceremony, so things like an official template, logo, and photographs can do a lot to make the ceremony feel more formal. I also get asked a lot of questions about Sigma Beta Delta’s presence on social media, so putting the Facebook, LinkedIn, and other profiles prominently on the website would be a great asset in getting students to join and stay engaged with the honor society.”



Renée Tyre
Wilmington University
10 years

What do you do as a Sigma Beta Delta Advisor?

“My role as a faculty advisor for Sigma Beta Delta is to send out invitations quarterly for qualifying students, submit request for qualifying students who may not have received an invitation, answer questions on eligibility criteria, help students through the application process, and celebrate them before graduation on their accomplishments.”

What strategies did you use during the school year to attract new members?

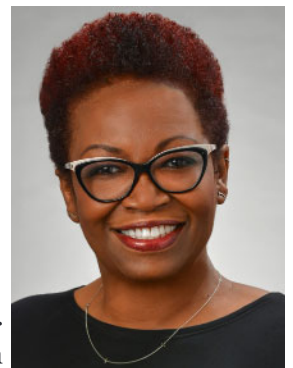
“When students start our program, I encourage them to not just to go to school, but to work hard and achieve honors for their work. I explain the criteria for Sigma Beta Delta at that point. We have posters where students can review in the Student Resource Center to gain information on Sigma Beta Delta. In the past, I had students who were in the honor society talk with other students to gain their interest in the program.”

Have you done any activities that have been successful in recruiting new members?

“The Hawaii Campus sends a memo to students once a quarter to recognize those who have maintained GPAs over 3.5. At that time, the GPA for Sigma Beta Delta is shared. Students are celebrated at all graduation workshops and the graduation ceremony with photos and an introduction to senior leaders and VIPs. This is always another way to get students excited and curious about Sigma Beta Delta. I believe we are doing what we can to promote the program through word of mouth from our faculty and honor students.”

What kind of support services would help build your success as an advisor?

“Perhaps, Sigma Beta Delta could have a faculty advisor corner on the website where we can recognize a student for their accomplishments. They could comment on how they earned the accomplishment and share the news with their colleagues.”



Renee Green
University of Phoenix
7 years

Alumni SPOTLIGHT

Scholarship recipient alumni share how receiving a scholarship has impacted their lives.

What did it mean to be granted this scholarship award?

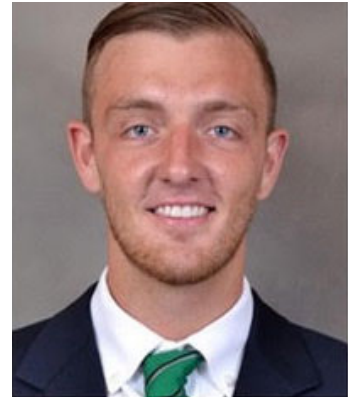
“It meant a great deal to me to be awarded this scholarship. This scholarship aided with the expenses of studying in the USA as an international student it also proved that anybody can be rewarded for the effort they put into their education. Not only did it benefit me personally, but it also helped the school I attended by giving them recognition for the quality of students they are producing through their education system.”

How has your scholarship award impacted your life?

“The scholarship award gave me the opportunity to connect and converse with people in various industries with different specializations, knowledge, and experience. The ease of access to the vast network and resources provided by Sigma Beta Delta is unparalleled.”

What does being a Sigma Beta Delta member mean to you?

“Being a member is an honor: it shows that dedication and hard work pays off. Being able to display membership shows employers and other like-minded people that I’m committed to achieving and maintaining the highest level of standards, no matter what the project or accomplishment. It shows you are not just an average student, you care about what you do and are passionate about the ethics with which you conduct yourself.”



Joe Bale
Thomas University
Member Since 2018

What did it mean to be granted the scholarship award?

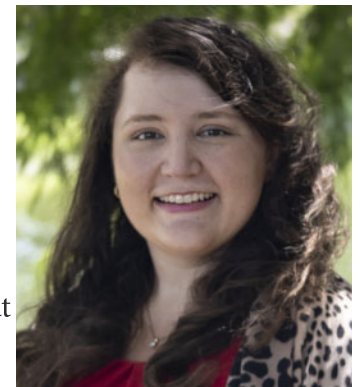
“It was a great honor to be selected for the scholarship award, and I was incredibly appreciative. Through Sigma Beta Delta’s support, I was able to complete my degree and attend the SBD Leadership Academy in Bentonville, Arkansas. Of my college career, that trip was undoubtedly a highlight. Most importantly, however, the scholarship afforded me the ability to graduate from college debt-free, which has given me the flexibility to pursue meaningful aspirations through my businesses.”

How has your scholarship award impacted your life?

“Sigma Beta Delta’s support allowed me to complete my degree, which I have used to continue running my property management business and start a thriving photography and social media management business, Cheetah Print Studios. With the skills I’ve learned through my degree in Supervision and Management, I can successfully apply everything that I’ve learned toward implementing proper business practices.”

What does being a Sigma Beta Delta member mean to you?

“Being a member reminds me to uphold the values of honor, meaningful aspirations, and wisdom in all things that I do. These values have helped me define many of the opportunities that I’ve pursued.”



Olivia Thomas
Daytona State College
Member Since 2017



NEW

Advising Committee



Joel Maier, Chair Advising Committee



What is the SBD Advising Committee planning?

“The committee is charged with identifying best practices in SBD Chapters. We are specifically interested in membership recruitment and induction ceremonies. We must learn how SBD can support our chapters and grow membership. The committee will identify top-yielding schools and, from these successful schools, pinpoint what advisors are doing. To achieve this, we will begin collecting data through annual reports and by surveying school advisors.”

What is the Committee’s goal?

“Our goal is to bring together the most active and successful school advisors with their peer advisors. Our strategy is to then identify activities that increase SBD membership acceptance rates and apply these best practices and recruiting strategies at other schools. Ultimately, we want to create a Chapter Advisor Kit.”

Who is on the committee?

“There are currently four SBD Board members who serve on the committee, Dr. Melinda Piller, William Kehoe, Dr. Sandy Hart, and myself. As we begin to identify top advisors, we will invite a few to review our plan and finalize deliverables, which will be made available to all chapter advisors.”

What are the advising committee timelines?

“The final step in our plan is to offer an Advisor Workshop in Fall 2022. Advisors will learn strategies for promoting the benefits of honor society membership and building great chapters. The following year, we will monitor membership growth and review induction ceremonies and chapter activities. By doing so, we will better understand which applications were helpful to schools and where we need to continue to focus our supportive efforts.”

“Please be sure to complete your Annual Report and look for our Advisor Survey in early 2022.”

Follow Sigma Beta Delta



sigmabetadelta.org

EXCLUSIVE
Member Benefits



Special offers and discounts.
Learn more by placing your camera over the QR code.



NEW
Merchandise

Shop Our
NEW Products
ONLINE!



Shop from our new online products by placing your camera over the QR code above.





SIGMA BETA DELTA— Scholarships



Each year, the Sigma Beta Delta Scholarship Awards Program gives over 30 awards, ranging from \$1,000 – \$1,500, to qualifying members for use in their academic studies. The objective of the scholarship is to recognize and honor the academic achievements of undergraduate and graduate members of Sigma Beta Delta.

Who is eligible?

Any SBD member or student who will be invited to become a member during the present academic year and will be enrolled in a business degree program at a regionally accredited college or university during the academic year following the announcement is eligible to apply to the SBD program. The recipient must use the scholarship in their senior or master’s level studies.

How do local chapters select their nominee?

Local chapters may set their own procedures for selecting their nominee. Each chapter will nominate only one member from their local chapter and forward only that application to the SBD Central Office.



SIGMA BETA DELTA— Networking

Sigma Beta Delta is advancing the career opportunities of members. As members graduate and assume important positions in the business community, they provide excellent sources of help and guidance for future employment. According to the United States Office of Personnel Management, membership in Sigma Beta Delta Honor society meets one of the requirements for entrance into numerous professional and technical occupations in Federal Service at a GS-7 Level. College graduates without previous experience can expect to start as a GS-5 grade unless they meet the criteria for superior academic achievement.



Sigma Beta Delta offers internships through Nationwide Insurance. Because SBD is part of the Association of College Honor Societies, members may qualify for internship scholarships with the Washington Internship Institute, The Fund for American Studies, The Washington Center of Internships and Academic Seminars, and The PhD Project.

2021 SIGMA BETA DELTA
Scholarship Award Recipients

CLIFFORD L. EUBANKS

Alexandra Long
Molloy College

DONALD H. DRIEMEIER

Blanca Rodriguez-Quintero
Miami Dade College

Alejandra Bencosme
UNIBE

Anna Doepp
Vanguard University

Arilerdy A. Bueno
Keane University

Daniella LaRosa
American Public University

Elizabeth Gee
Randolph Macon College

Elvira Edstron
Palm Beach Atlantic Univ

Grace Andreski
Walsh University

Hale Thomas
Springfield College

JAMES H. BEARDEN

Luis Mata
University of North Texas

WILLIAM KEHOE

Jaiden McCollum
College of St. Benedict

Hemil Patel
Penn State Lehigh Valley

June Schlereth
Mary Baldwin University

Justin Brooks
Wilmington University

Lauren Yancer
Gwynedd Mercy University

Madelyn Haley
Culver-Stockton College

Mary Anne Moubtrak
Davenport University

Myles Simon
Univ of the Cumberlands

Sarah Cline
North Greenville University

RICHARD SCOTT

Tiffoney Smith
Thomas University

QUIESTER CRAIG

Madison Grant
Hampton University

Nancy Avila
Whittier College

Nicole E. Anderson
St. Michael's College

Pamela Mundi
Johnson University

Robert Redinger
Waynesburg University

Saydey Shubert
Lincoln College

Shelby Brittain
Misericordia University

Simba Gote Bere
Hope Int'l University

Tyler Patterson
Dominican University

Zachary Lebreino
Emmanuel College

Congratulations to the Class of 2021 Sigma Beta Delta Scholarship Award Recipients. A total of \$34,000 was awarded to 31 students for their outstanding academic achievements and aspirations. Winners received an award of \$1,000 for named scholarships or \$1,500 for general scholarships to use for their future education.



2020-2021 SIGMA BETA DELTA DONORS
Thank you for your support!



\$1,000+

Dr. Bobby and Sandra Hart

Up to \$50

**Ajsa Washington
Angela Albanese
Anthony Scardino
August Stevens
Bernadete Vandunk
Bert Bunnell Jr.
Bryan Dwyer
Charles Green
Christina Witte
David Rodriguez
Elizabeth Lancaster
Evelyn Robertson
Gail Gould
Galoff Walker
HD Charles
Herbert Lockett
Helen AnneZane
Jerome Cook
Joseph Cochran
Jon Crispin
Judith Dixon**

**Karol Tiemann
Katheleen Kotakis
Kathryn Tvorik
Laurie Brunson
Marganda Oliveira
Miriam Mishkin
Nancy Pizzo
Nancy Williamson
Nannette Scudiero
Patricia Haskin
Phyllis Cappuccio
Robert Henderson
R. Douglas Hoffman
Rosemarie LaTourette
Sara Talamantes
Steven Rizzo
Thomas Weiss
Tracy Hagston
Victoria Heydari
Wesley Jackson
SGTMAJ Everett Gilliam**

\$101-\$500

**Christina McDonald
Fred Hunter
Karol Tiemann
Richard Brown III
SWCBSP**

\$55-\$100

**Deanna Jones
Jared Kershner
Maxwell Edomwande
Michelle Pickels
Patricia Colbert**

The Sigma Beta Delta mission is to encourage and recognize scholarship and accomplishment amongst students in business, management, and administration. All donations are tax deductible.